



## **ABERDEEN BOAT CLUB**

# **“SUNSEEKER” OPENING YACHT REGATTA 2016**

## **SAILING INSTRUCTIONS**

**SATURDAY 24<sup>TH</sup> & SUNDAY 25<sup>TH</sup>  
SEPTEMBER**

Supported by:





**ABC OPENING REGATTA**  
**24<sup>th</sup>-25<sup>th</sup> SEPTEMBER 2017**

Last year's entry list is an illustration of the growing popularity of this curtain-raising event to the Autumn and Winter yachting season. Given a similar level of growth in Dinghy entries, staging the two events separately over two weekends for the first time, is a self-explanatory move to spread the load on logistics and staff. It also provides the added benefit of two sporting weekends afloat for those so inclined.

ABC is delighted to welcome back Sunseeker, as Title Sponsor for the 13<sup>th</sup> year and is most grateful for the continuation of their invaluable support.

Weather as we all know is becoming increasingly unpredictable and September is the monsoon transition month: but as the event now falls in the latter part, the hope is that steady Easterly, if not NE'ly, winds will favour this year's racing.

I very much look forward to participating , to engaging once more with many regular boats and crews, and to meeting new crews of any boats , old or new, entering for the first time. ABC's traditional post race hospitality and prize giving will provide a convivial welcome to all after each day's event.

Regardless of weather, ABC's staff will be out on the water, and behind the bar, in full support with their usual enthusiasm and dedication and I thank them greatly on behalf of the Committee for their efforts.

Wishing all participants—without whom there would be no regatta!---spirited, fair and safe racing with much fun afloat and back ashore.



**Chris Pooley**  
**Commodore, Aberdeen Boat Club**



# ABERDEEN BOAT CLUB “SUNSEEKER” OPENING REGATTA 2016

## SAILING INSTRUCTIONS

**SATURDAY 24<sup>TH</sup> AND SUNDAY 25<sup>TH</sup> SEPTEMBER**

The Regatta Organising authority is the Aberdeen Boat Club under the auspices of the Hong Kong Sailing Federation.

### 1. Rules

- 1.1 The Regatta will be governed by the ‘Rules’ as defined in The Racing Rules of Sailing (RRS) 2013-2016.
- 1.2 The Prescriptions of the Hong Kong Sailing Federation (HKSF) will apply, together with:
  - The IRC Rules, Parts A, B and C (IRC Rule 22.4 shall not apply). There will be no limitations on crew number or weight, except single handed cruiser entries are not acceptable;
  - the HKPN Handicap System, (including the PIPS – Performance Increase Penalty Scheme);
  - the rules of the SMS system for the Sports boat class;
  - the ISAF Offshore Special Regulations Category 5 - Appendix J, plus VHF radio for cruisers with accommodation (except that the requirement to be self-righting will not apply to the Multihull Classes); Class Association rules of competing classes;
  - the ABC Sunseeker Opening Yacht Regatta 2016 Notice of Race (OYR 2016 NoR).

In case of conflict between any of the above, succeeding items take precedence.  
This changes RRS 63.7.

- 1.3 IRC Rule 21.6.1 will apply. This amends the OYR 2016 NoR. Clause 1.4.
- 1.4 The International Regulations for Preventing Collisions at Sea (IRPCAS), (Steering and Sailing Rules) will apply between sunset and sunrise and will replace the rules of RRS Part 2.
- 1.5 If the Protest Committee decides that a boat which is party to a protest has broken a rule and is not exonerated, it may impose a scoring penalty (which may be no penalty) at its discretion, as an alternative to disqualification. This changes RRS 64.1.
- 1.6 Any Notice to Mariners that may have an impact on racing will be posted on the Official Notice Board (ONB) and shall be deemed part of these SIs. RRS 48.2 shall not apply.



## 2. Notice to Competitors

- 2.1 Notices to Competitors will be posted on the Yachts Notice Board at the Aberdeen Boat Club, which is located in the passage outside the Marine & Sailing Office and outside the top carpark entrance.
- 2.2 Copies of the Amendments and Notices to Competitors will also be displayed on the Regatta website: [http://www.abclubhk.com/opening\\_regatta\\_2016.aspx](http://www.abclubhk.com/opening_regatta_2016.aspx)

## 3. Changes to Sailing Instructions

- 3.1 Changes to the Sailing Instructions will be posted on the Yachts Notice Board and regatta website before 1800 hrs on the day before it will take effect.
- 3.2 Late changes may be made on VHF Ch. 72 prior to the warning signal, in this event Code flag L will be displayed on the committee boat.

## 4. Schedule of Races

- 4.1 Racing will be scheduled to start on Saturday 24<sup>th</sup> September with the warning signal for the first class or division of class at 1055 hrs. On Sunday 25<sup>th</sup> September the warning signal for the first class or division of class will be at 1025 hrs.
- 4.2 Classes might be started together depending on the entries received. For subsequent starts, classes may be started in any order.
- 4.3 On Saturday, all Classes will start in the area East of Lamma Island.
- 4.4 On Sunday, all classes will start in either the ABC Round Island start or the ABC Lamma start. The start location will be posted on the Regatta website by 0900 hrs.

## 5. Class Flags and Divisional Splits

- 5.1 The following flags will serve as divisional Flags:

IP	DIVISIONS	SPLIT/SYSTEM
Flag O	Yachts IRC Class 1	IRC of 1.151 and above
Flag T	Yachts IRC Class 2	IRC of 1.040 to 1.150
Flag D	Yachts IRC Class 3	IRC of 1.039 and below
Flag J	J/80s, J 70s and Sports Boats	respectively OD level rating and SMS
Flag F	Yachts HKPN Class A	HKPN of 999 and below
Flag G	Yachts HKPN Class B	HKPN of 1000 to 1079
Flag V	Yachts HKPN Class C	HKPN of 1080 and above

- 5.2 While racing, a boat shall display the flag assigned to her class on her backstay. This does not apply to Sports Boats and Flying Fifteens.

## 6. Race Area

The Racing Area will be in Hong Kong Waters and outlined in Appendix A to these SI's.

## 7. The Courses

- 7.1 All courses to be sailed are listed in Appendix A – Windward/leeward and Island Courses.
- 7.2 On Saturday 24<sup>th</sup> September – the courses will be Windward/leeward. This amends the OYR 2016 NoR – Clause 5.2.



- 7.3 The number of the course to be sailed will be signaled by a flag showing the course number in conjunction with the Class Flag.
- 7.4 No later than the Warning Signal, the Race Committee Signal Boat will display the approximate compass bearing to the windward mark.

**For Island Courses only:**

- 7.4.1: If Flag "W" is displayed with the course number (flag), the first mark of the course will be an yellow mark to windward of the starting line and shall be rounded to Port, if a red flag is displayed below Flag 'W', and to Starboard if a green flag is displayed. The second mark of the course will be the first mark in the course description.
- 7.4.2: If a "W" flag is not flown, the first mark of the course will be the one listed and described in the course description in Appendix A.
- 7.4.3: The Race Committee will broadcast on VHF Ch.72 of the windward mark, if laid.

**8. Marks**

- 8.1 The marks of the courses will be inflatable buoys and islands as described in Appendix A.
- 8.2 A new mark, as provided for in SI 10, will be a black spherical buoy with a white contrasting band or a yellow cylindrical buoy with a white cover depending on the Class or division.
- 8.3 The port end Starting Mark will be a staff displaying an orange flag on a small ODM Committee Boat or a yellow cylindrical buoy.
- 8.4 The Finishing Mark will be a yellow cylindrical buoy.

**9. The Start**

- 9.1 Races will be started using RRS 26, with the warning signal made five minutes before the starting signal.
- 9.2 To warn boats that a race or sequence of races will begin soon, an orange flag will be displayed with one sound at least four minutes before the first warning signal.
- 9.3 The starting line will be between the staff displaying an orange flag on the signal boat at the starboard end, and the starting mark (ODM) at the Port end. If an Inner Distance Mark (IDM) is laid, boats shall not pass between the Signal Boat and the IDM.
- 9.4 For the first race each day the Race Committee intends to start classes in the order as signaled on the Committee Boat.
- 9.5 In addition to RRS 29.1 individual recalls may be broadcast on VHF Ch. 72. Individual recall details such as sail numbers and/or yacht names may subsequently be given, but not necessarily immediately after the start. It remains the individual responsibility of boats to start correctly.



- 9.6 In addition to RRS 29.2 general recalls will also be announced on VHF Ch. 72.
- 9.7 A boat starting later than 4 minutes after her Starting Signal may be scored Did Not Start without a hearing. This changes RRS 63.1.
- 9.8 Boats whose warning signal has not been made shall avoid the starting area during the starting sequence for other classes
- 10. Change of the Next leg of the Course.**
- 10.1 Marks will be changed according to RRS 33.
- 10.2 To change the next leg of the course, the Race Committee will lay a new mark (or move the finishing line) and remove the original mark as soon as practicable. When in a subsequent change a new mark is replaced, it will be replaced by an original mark.
- 10.3 Boats may without penalty request details or confirmation of a course change from the Race Committee Signal Boat on VHF Ch. 72.
- 10.4 For Course One and Two, the new mark will be a **black spherical buoy with a white contrasting band for Mark 1.**
- 10.5 For Course Three and Four, the new mark will be a **yellow cylindrical buoy with a white cover for Mark 1 A.**
- 11. The Finish**  
The finishing line will be a line between a staff displaying an orange flag on the race committee boat at the starboard end and the port-end yellow finishing mark.
- 12. Penalty System**  
For all Multihull Classes, RRS 44.1 is changed so that the Two-Turns Penalty is replaced by the One-Turn Penalty.
- 13. Exoneration Penalty**
- 13.1 A boat that may have broken a rule may, after finishing the race concerned and before the start of a related protest hearing, notify the Race Committee that she accepts a 20% scoring penalty, except the minimum scoring penalty shall be 3 places. This changes Rule 44.3(c).
- 13.2 The Exoneration Penalty is not available for a breach of Rule 2 or of class rules or for gross misconduct under Rule 69. Nor is it available to a boat that caused injury or serious damage, or gained a significant advantage by her breach of the rules.
- When an exoneration penalty is accepted;
- 13.2.1 Neither the boat nor the Protest Committee may then revoke or remove the penalty.
- 14. Time Limits**
- 14.1 The time limit for each Windward/Leeward race is 2 hours.
- 14.2 The time limit for the Island Race on Sunday 25<sup>th</sup> September is 1600 hrs.
- 14.3 Boats failing to finish within these time limits will be scored Did Not Finish (DNF) without a hearing. This changes RRS 35, A4 and A5.



14.4 The Race Officer may shorten the course as he sees fit in accordance to RSS 32, in order to give all boats a finish.

**15. Protests and Requests for Redress**

15.1 A boat that wishes to protest or seek redress shall advise the Race Committee by hailing or on VHF Ch. 72, or by telephone to the Race Officer (Tel: 9312 8893) no later than 30 minutes after the last boat of the specific division finishes each race.

15.2 Protests and requests for redress or reopening shall be delivered to the Race Office within the appropriate Time Limit. Protest Forms are available at the Race Office and in the Middle Island Protest tent.

15.3 For each class the protest time limit is 90 minutes after the last boat in the protesting boat's class finishes the last race scheduled for the day. This changes RRS 61.3 and 62.2.

15.4 Notices will be posted no later than 15 minutes after the protest time limit to inform competitors of hearings in which they are parties or named as witnesses. Hearings will held in the ABC protest tent at Middle Island, as soon as possible.

15.5 On the last day of the Regatta, a request for reopening a hearing shall be delivered.

15.5.1 Within the protest time limit if the requesting party was informed of the decision on the previous day.

15.5.2 No later than 30 minutes after the requesting party was informed of the decision on that day. This changes RRS 66.

**16. Scoring**

16.1 All races will count equally and there will be no discards.

16.2 Corrected times for boats racing under a rating system will be calculated to the nearest whole second.

**17. Safety Regulations and Scrutinising**

17.1 Each skipper or his representative shall register for the Regatta in accordance with the Notice of Race.

17.2 All boats shall be liable for inspection before and during the Regatta, at which time the owner shall ensure that a responsible member of the crew is present to assist in identifying all safety equipment.

17.3 Any boat failing to submit to inspection or which fails to comply, will be liable to disqualification from the Regatta, or to such other penalty, as the protest committee, at its discretion may prescribe.

17.4 No anchor shall be carried forward of the stem or with any part of it outboard, except when anchoring.



**18. Radio Communications**

- 18.1 The Race Committee may broadcast information to the fleet on VHF Channel 72 at the start and finish of the race. Boats are strongly advised to monitor VHF Channel 72 with a loudspeaker or handheld VHF on deck. A boat may, without infringing RRS 41 (outside help) request and receive repetition of information broadcast by the Race Committee, or be told whether or not a broadcast has been made.
- 18.2 Any boat which retires from racing must report to the ABC Committee boat on VHF Channel 72.

**19. Prizes**

Prizes will be awarded on Sunday 25<sup>th</sup> September at approximately 1830 hrs, subject to any outstanding Protests, at the ABC Middle Island Clubhouse.

**20. Disclaimer of Liability**

- 20.1 The Aberdeen Boat Club, the Organising Committee, the Race Committee, Regatta Sponsors and their respective representatives, Officers, Members, Staff and Volunteers accept no liability whatsoever for any loss of life or property, personal injury and damage caused by, or arising out of the Regatta.
- 20.2 The responsibility for a boat's decision to participate in a race or to continue racing is hers alone. (RRS Fundamental Rule 4). In addition competitor's attention is drawn to the ISAF Special Regulations 1.02.1 (first point) which begins "The safety of a yacht and her crew is the sole and inescapable responsibility of the Person-in-charge..." Competitors participate in the regatta entirely at their own risk.
- 20.3 Owners and skippers are invited to co-operate with the Organising Authority, Race Committee and ABC Marine & Sailing Office in completing the formalities of their boat entries by submission of all required information, certificates, forms, etc. within the deadline dates quoted throughout this NoR. Failure to comply will result in a boat not entering the series correctly and will require supporting evidence to be presented to the race committee to comply.

**21. Insurance**

Entered boats shall have third party liability insurance at least to the minimum cover required under Hong Kong SAR law. Please Note: New third party insurance amendments come in to effect from the 1st September: <http://www.mardep.gov.hk/en/notices/pdf/mdn16071.pdf>





### Additional Information

**Race Officer: Greg Sinclair**

**Marine Services Manager - Alex Johnston: 6773 – 2066**  
**ABC Sailing Office                      Jennifer Li: 2552 - 8182 Ext: 834**

### Cruiser Trophies

<b>IRC Class 0</b>	<b>Tau Chau Cup</b>
<b>IRC Class 1</b>	<b>Crystal Trophy</b>
<b>IRC Class 2</b>	<b>Lamma Channel Cup</b>
<b>IRC Class 3</b>	<b>Sung Kong Cup</b>
<b>HKPN Class A</b>	<b>Pacific Cup</b>
<b>HKPN Class B</b>	<b>Adamasta Channel Cup</b>
<b>J 80's</b>	<b>Hong Kong Clipper Cup</b>



**ABERDEEN BOAT CLUB  
 "SUNSEEKER" OPENING REGATTA 2016  
 APPENDIX A**

---

**COURSE DIAGRAMS AND DESCRIPTIONS FOR WINDWARD/LEEWARD COURSES**

---

After starting and before finishing all marks will be rounded to Port in the following order:

COURSE ONE	Start,	1,	3,	1,	3,	1,	Finish
COURSE TWO	Start,	1,	3,	1,	Finish		
COURSE THREE	Start,	1A,	3A,	1A,	3A,	1A,	Finish
COURSE FOUR	Start,	1A,	3A,	1A,	Finish		

- The Starting Outer Distance Mark (ODM) will be a yellow cylindrical buoy
- Mark 1 will be a large spherical black buoy
- Mark 1A will be a large cylindrical yellow buoy
- Mark 3 will be a large cylindrical yellow buoy
- Mark 3A will be a large black spherical buoy
- The Finishing Outer Distance Mark will be an yellow cylindrical buoy
- The Course Change Mark will be a black spherical buoy with a white contrasting band for Mark 1
- The Course Change Mark will be a yellow cylindrical buoy with a white cover for Mark 1A.



**Mark 1**



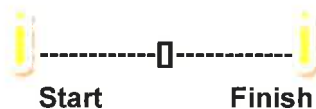
**Mark 1A**



**Mark 3A**



**Mark 3**





## DESCRIPTIONS FOR ISLAND COURSES

All Island courses will start & finish in the following locations, depending on the prevailing weather conditions: (Note: The following GPS are only approximates)

- ABC Round Island Start Line 22° 13'.5N 114° 10'.8E
- ABC Finish East 22° 12'.5N 114° 11'.4E
- ABC Lamma Start Line/ABC Finish West 22° 11'.4N 114° 09'.3E
- ABC Tai Tam Club Mark 22° 11'.8N 114° 14'.1E
- Weather Beacon 22° 09'.2N 114° 06'.0E

If Flag "W" is displayed with the course number flag, the first mark of the course will be an Yellow mark to windward of the starting line and shall be rounded to Port, if a red flag is displayed below Flag 'W', and to Starboard if a green flag is displayed. The second mark of the course will be the first mark in the course description. If a "W" flag is not flown, the first mark of the course will be the one listed in the course description below.

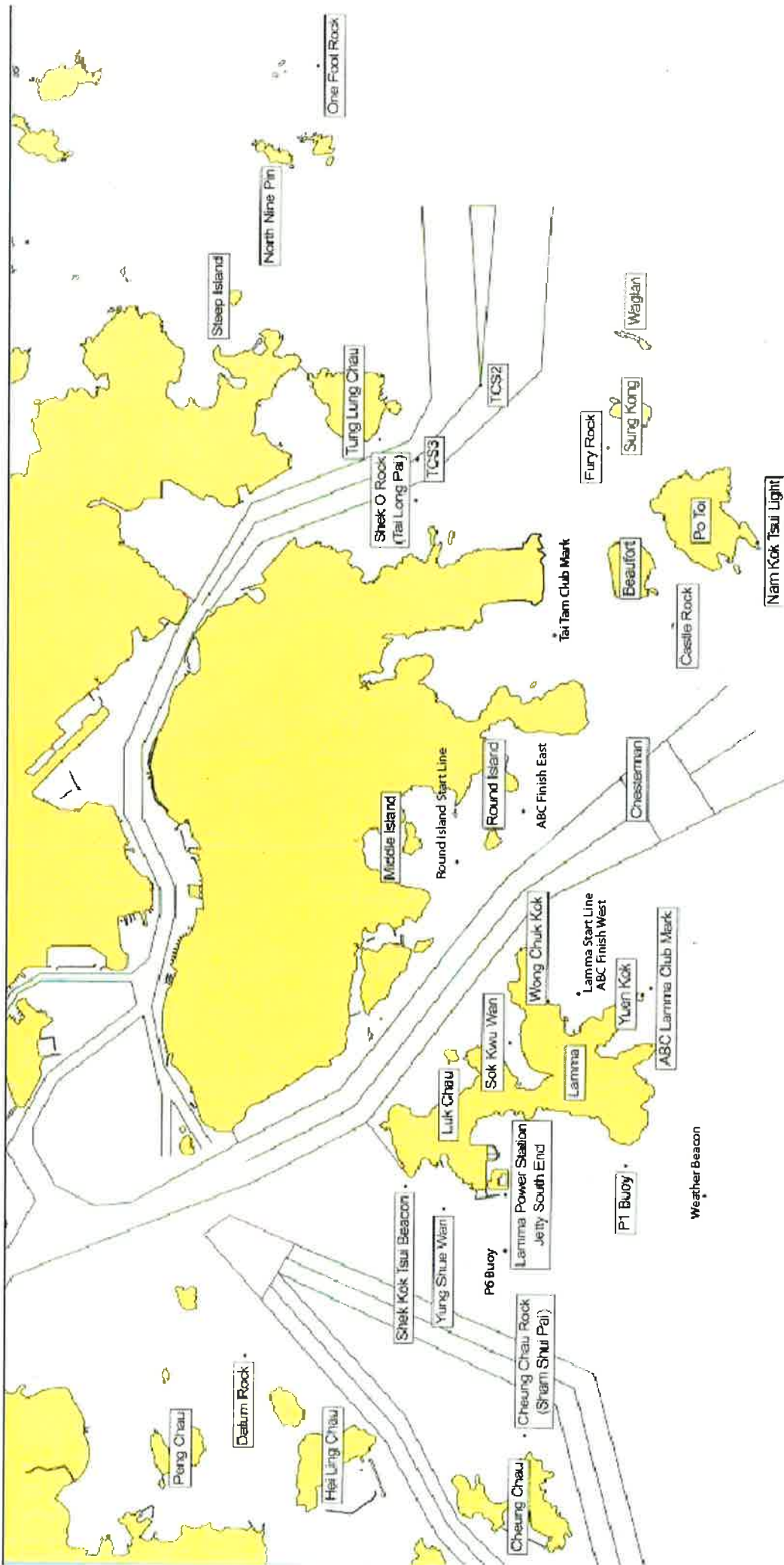
Tai Tam Club Mark (Course 8 and 10) shall be a black round buoy with ABC identification letters.

<b>ABC Round Island Start – Eastern Courses</b>	
No	Course
1	ABC Round Island Start; Po Toi Island (Port); Waglan Island (Port); One Foot Rock Buoy (Port); TCS2 (Port); Fury Rocks (Starboard); Beaufort Island (Starboard); Castle Rock (Starboard); Chesterman Buoy (Starboard); Round Island Finish (30.5 nm).
2	ABC Round Island Start; Start; Po Toi Island (Port); Waglan Island (Port); TCS2 (Port); Fury Rocks (Starboard); Castle Rock (Starboard); Chesterman Buoy (Starboard); Round Island Finish (21.2 nm).
3	ABC Round Island Start; Fury Rocks (Port); Shek O Rock (Port); Beaufort Island (Starboard); Castle Rock (Starboard); Chesterman Buoy (Starboard); Round Island Finish (18.2 nm).
4	ABC Round Island Start; Chesterman Buoy (Port); Waglan Island (Starboard); Po Toi Island (Starboard); Castle Rock (Port); Chesterman Buoy (Starboard), Round Island Finish (18.6 nm).
5	ABC Round Island Start; Castle Rock (Port); Beaufort Island (Starboard); Shek O Rock (Port); Castle Rock (Starboard); Chesterman Buoy (Starboard); Round Island Finish (17.3 nm).
6	ABC Round Island Start; Beaufort Island (Port); Po Toi Island (Starboard); Castle Rock (Port); Chesterman Buoy (Starboard); Round Island Finish (14.7 nm).
7	ABC Round Island Start; Po Toi Island (Port); Beaufort Island (Starboard); Castle Rock (Starboard); Chesterman Buoy (Starboard); Round Island Finish (14.4 nm).
8	ABC Round Island Start; Chesterman Buoy (Port); Castle Rock (Port); Tai Tam Club Mark (Port); Castle Rock (Starboard); Chesterman Buoy (Starboard); Round Island Finish (12.5 nm).



9	ABC Round Island Start; Chesterman Buoy (Port); Castle Rock (Port); Chesterman Buoy (Starboard); Round Island Finish (9.2 nm).
10	ABC Round Island Start; Chesterman Buoy (Port); Tai Tam Club Buoy (Port); Castle Rock (Starboard); Chesterman Buoy (Starboard); Round Island Finish (10.6 nm).
<b>ABC Lamma Start – Western Courses</b>	
11	ABC Lamma Start; ABC Mark off Yuen Kok (Port); Lamma Island (Starboard); Cheung Chau Rock (Starboard); Datum Rock (Starboard); Lamma Island (Port); ABC Mark off Yuen Kok (Starboard); ABC Lamma Finish (20.5 nm).
12	ABC Lamma Start; ABC Mark off Yuen Kok (Port); Lamma Island (Starboard); Cheung Chau Rock (Port); Lamma Island (Port); ABC Mark off Yuen Kok (Starboard); ABC Lamma Finish (14.4 nm).
13	ABC Lamma Start; ABC Mark off Yuen Kok (Port); Lamma Island (Starboard); P1 Buoy (Port); Weather Beacon (Port); P1 Buoy (Starboard); Lamma Island (Starboard); ABC Mark off Yuen Kok (Starboard); ABC Lamma Finish (11.6 nm).
14	ABC Lamma Start: ABC Mark off Yuen Kok (Port), Lamma Island (Starboard); P1 Buoy (Starboard); Datum Rock (Starboard); Cheung Chau Rock (Port); Weather Beacon (Port), P1 Buoy (Starboard); ABC Mark off Yuen Kok (Starboard); ABC Lamma Finish (24 nm).
15	ABC Lamma Start; ABC Mark off Yuen Kok (Port), P1 Buoy (Starboard); Datum Rock (Port); Hei Ling Chau (Port); P1 Buoy (Starboard); ABC Mark off Yen Kok (Starboard); ABC Lamma Finish (22.3 nm).
16	ABC Lamma Start; ABC Mark off Yuen Kok (Port); Cheung Chau Rock (Port); P1 Buoy (Starboard), ABC Mark off Yen Kok (Starboard); ABC Lamma Finish (14.4 nm).

**The following chart is for reference only**



Racing area map and approximate location of standard course marks  
**Note:** The following represent approximate positions of marks.

Round Island Start Line	22° 13'.5N 114° 10'.8E	Lamma Power Station Jetty South End	22° 12'.8N 114° 06'.1E	Weather Beacon	22° 09'.2N 114° 06'.0E
ABC Finish East	22° 12'.5N 114° 11'.4E	One Foot Rock Buoy	22° 15'.2N 114° 22'.1E	Wong Chuk Kok	22° 12'.5N 114° 09'.6E
Lamma Start Line/ABC Finish West	22° 11'.4N 114° 09'.3E	Nam Kok Tsui Light	22° 09'.4N 114° 15'.5E	Yuen Kok	22° 10'.9N 114° 08'.9E
ABC Lamma Club Mark	22° 10'.5N 114° 09'.2E	P1 Buoy	22° 11'.0N 114° 06'.04E		
ABC Tai Tam Club Mark	22° 11'.8N 114° 14'.1E	P6 Buoy	22° 12'.07N 114° 05'.07E		
Chesterman Buoy	22° 11'.2N 114° 12'.0E	Shek Kok Tsui Beacon	22° 14'.1N 114° 06'.3E		
Cheung Chau Rock (Sham Shui Pai)	22° 12'.3N 114° 02'.8E	Shek O Rock (Tai Long Pai)	22° 14'.0N 114° 16'.0E		
Datum Rock	22° 16'.3N 114° 03'.8E				

