

Notice of Race & Entry Form (www.dbyc.net)
for the DBYC Middle Island Regatta (MIR) 27th & 28th Sept 2014
& DBYC Leg of COA Championship.

The DBYC Middle Island Regatta is open to all DBYC and ABC members, and members of any HKSF-affiliated club. Eligible boats may be entered by returning the attached entry form to the DBYC by 1700 hrs on Tuesday, 23rd Sept. The event will consist of two races with two prize-givings, scheduled as follows:

Fri, 26th Sept

Visiting boats arrive DBMC
1900 Bilge Bar meet-and-greet

Sat, 27th Sept

0900 Skippers Briefing, Bilge Bar DBMC
1100 Start Race 1 off DB
1600 Finish off Middle Island
1700 Welcome drinks at the ABC Middle Island clubhouse.
1900 Parisienne Bistro Buffet (Cash Bar)
2100 Prize-giving Race 1

Sun, 28th Sept

0800 Breakfast at Middle Island
0830 Skippers briefing
1000 Pursuit Race First start Race 2 off Middle Island
1600 Finish off DB
1700 Prize-giving Race 2 and overall, DBMC with Bar (pay as you go).



RACING OUTLINE

Race 1 will be an “islands race” starting in the vicinity of Discovery Bay and finishing near Middle Island. Race 1 is a COA Championship leg.

Race 2 of the MIR will be conducted as a Pursuit Race. All boats shall start at a time defined by their handicap, and finish order will equal prize order. Start times will be issued at the race briefing prior to Race 2. Handicaps may be adjusted by the Race Committee overnight to reflect each boat’s performance from Race 1. DBYC SRI 8.2 refers.

Boats will be handicapped by HKPN. Those boats with IRC ratings are requested to submit their ratings as part of an ongoing HKPN validation exercise. IRC Results will be published for Race 1, but prizes will only be awarded for HKPN Results.

Prizes will be awarded for places in each Race by class including IRC if more than 3 participate in each class.

The DBYC Middle Island Regatta will be governed by the ISAF Racing RRS 2005-08, the Prescriptions of the HKSF, the DBYC Standard Racing Instructions (SRI) and the Middle Island Regatta Sailing Instructions. All boats shall comply with the current edition of the ORC Special Regulations Category 4, and shall hold valid third party insurance.

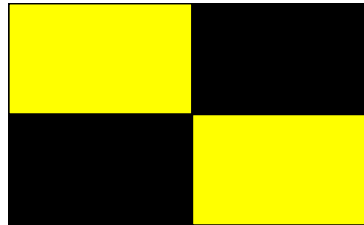
The attention of all competitors is drawn to the Fundamental Rules in Part 1 of the RRS, particularly with respect to the safety of a boat and her crew being the sole responsibility of the Skipper, who must ensure that the boat is seaworthy and properly equipped and that the crew are able to cope with emergencies and poor weather conditions. All those taking part in the event do so at their own risk and responsibility. Each boat is solely responsible for the decision to race or to continue racing. Entrants shall note and advise all crew members that competitors participate at their own risk and that the DBYC does not accept any liability for any loss or damage to persons or property that may result from such participation.

DISCOVERY BAY YACHT CLUB

Sailing Instructions for the Middle Island Regatta
Saturday 27th Sept & Sunday 28th Sept 2014



NOTICE TO COMPETITORS



Change to Sailing Instructions # 1

Course and Timing Change for Race 1 for very light wind forecast

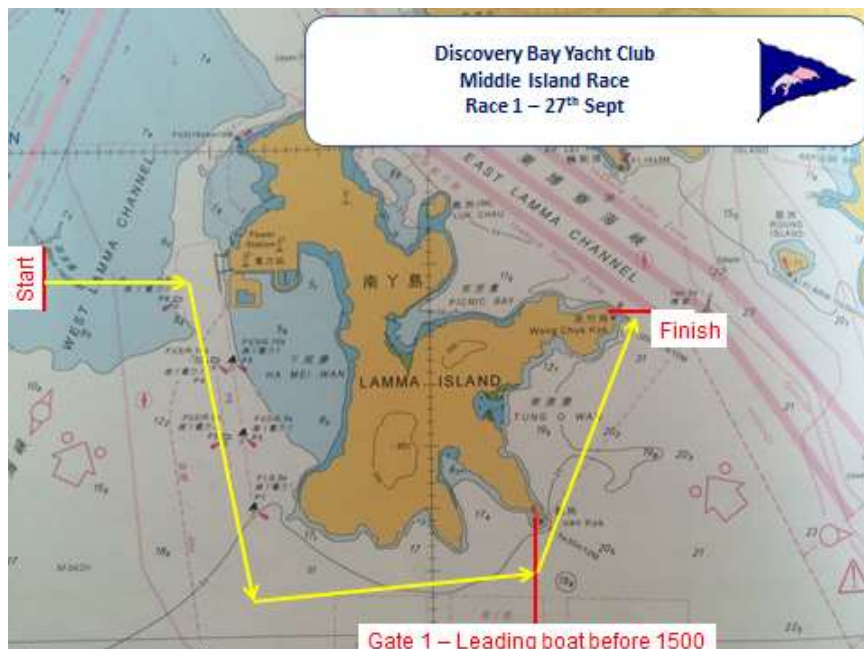
All competitors should note the following paragraphs of the Sailing Instructions for the DBYC Middle Island Regatta 2014 should be amended to read as follows:

Starting Times

7.1 Race 1 - Discovery Bay to Middle Island on Sat, 27th September:

	Start Time	IC Flag
Division B	1220 hours	J
Division A	1240 hours	K

Course



DISCOVERY BAY YACHT CLUB

Sailing Instructions for the Middle Island Regatta

Saturday 27th Sept & Sunday 28th Sept 2014



- 8.2 **Race 1:** Start Wave Measuring buoys west of Lamma Power station
[22°13.238N 114° 04.568E]
- Windward Mark P6 Red Can west of Lamma Power Station [22°12.750N 114° 05.720E] Stbd
Lamma Island Port
- First gate** Line **1000m** due south magnetic of Yuen Kok Light, South Lamma,
[22°10.893N – 114°8.948E]
- Finish** Line length **500m** from Wong Chuck Kok Light [22 12.528N 114 9.604E]
transit 090 to LCS2, East Lamma Channel [22 12.530N 114 10.40E]
within the Inshore Traffic Zone of East Lamma Channel.

The Start

- 9.1 The Committee Boat will fly a blue flag when in position at the starting line.
- 9.2 Race 1 will be started in accordance with RRS rule 26, with the warning signal given five minutes before the starting signal.
- 9.3 The starting line will be a line between a staff displaying an orange flag or shape on the Committee Boat at the port or starboard end of the line and a buoy laid as an outer distance mark (ODM) at the port or starboard end of the line. An inner distance mark (IDM) may also be laid, in which case boats shall pass between the IDM and the ODM when starting.
- 9.4 The **ODM** will be the **NEAREST** (to the committee boat) of the Wave Measuring buoys west of Lamma Power station [22°13.238N 114° 04.568E]
- 9.5 The **WINDWARD MARK** will be P6 Red Can west of Lamma Power Station [22°12.750N 114° 05.720E] approximately 1nm East of the start line, the mark is to be left to starboard. Commercial vessels may be moving in this area, skippers take appropriate action.
- 9.6 The location of the start line for Race 1 will be laid in the vicinity of Wave Measuring buoys west of Lamma Power station [22°13.238N 114° 04.568E] **Committee Boat will be on station.**
- 9.7 The location of a start line shall not be subject to protest or claim for redress. This changes RRS 62.1(a).
- 9.8 A boat whose class warning signal has not been made shall keep clear of the starting area and of all boats whose class warning signal has been made.
- 9.9 Boats shall not use engine propulsion after 4 minute signal for their class.

10 The Finish

- 10.1 The committee boat will fly a blue flag when in position and on station at the finishing line.
- 10.2 The finish shall be a Line length **500m** from Wong Chuck Kok Light [22 12.528N 114 9.604E] transit 090 to LCS2, East Lamma Channel [22 12.530N 114 10.40E] **within the Inshore Traffic Zone** of East Lamma Channel. The finish line may be unmanned.
- 10.3 Or if the Committee boat is on station a line between a staff displaying an orange flag or shape on the committee boat at the starboard end of the line, and the designated land mark, Wong Chuck Kok Light.

DISCOVERY BAY YACHT CLUB

Sailing Instructions for the Middle Island Regatta

Saturday 27th Sept & Sunday 28th Sept 2014



10.4 Boats shall note their own GPS time, and as far as practicable, wait in the vicinity of the finishing line to note the time of the next finisher on the Declaration Form. Each Skipper will SMS their finish time and that of the next finishing boat to the following number 60555711 failing to do so will invalidate your finish time. **Please deliver your declaration to Committee Boat at ABC Middle Island when you have berthed.**

11 Course Shortening & Timing

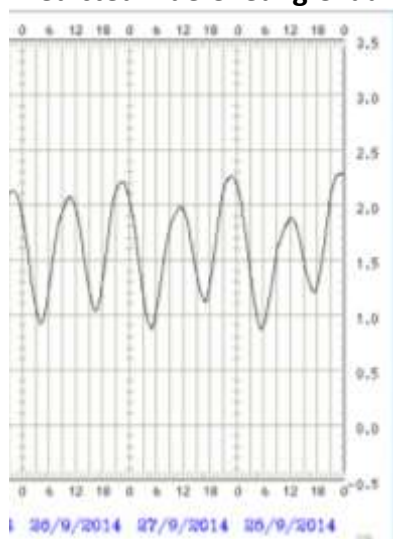
11.1 The courses may be shortened at any mark of the course or immediately beyond the mark of the course by visual signal, IC flag S, flown by the Committee Boat. Boats should then finish by passing between the Committee Boat and the mark.

11.2 Cut-off Gate 1: For Race 1 only, boats MUST take their own GPS time as they pass across a line **1000m** due south magnetic of Yuen Kok Light [22°10.893N – 114°8.948E] South Lamma, . This time may be used if the course is shortened due to weather conditions. The cut-off time for leading boat to pass through Gate 1 is 1500. If the leading boat fails to pass through Gate 1 by 1500, this will become the finish line for the purposes of Race 1.

Safety Note, if winds are light all vessels to cross East Lamma Channel under power to maintain safe distance from commercial shipping.

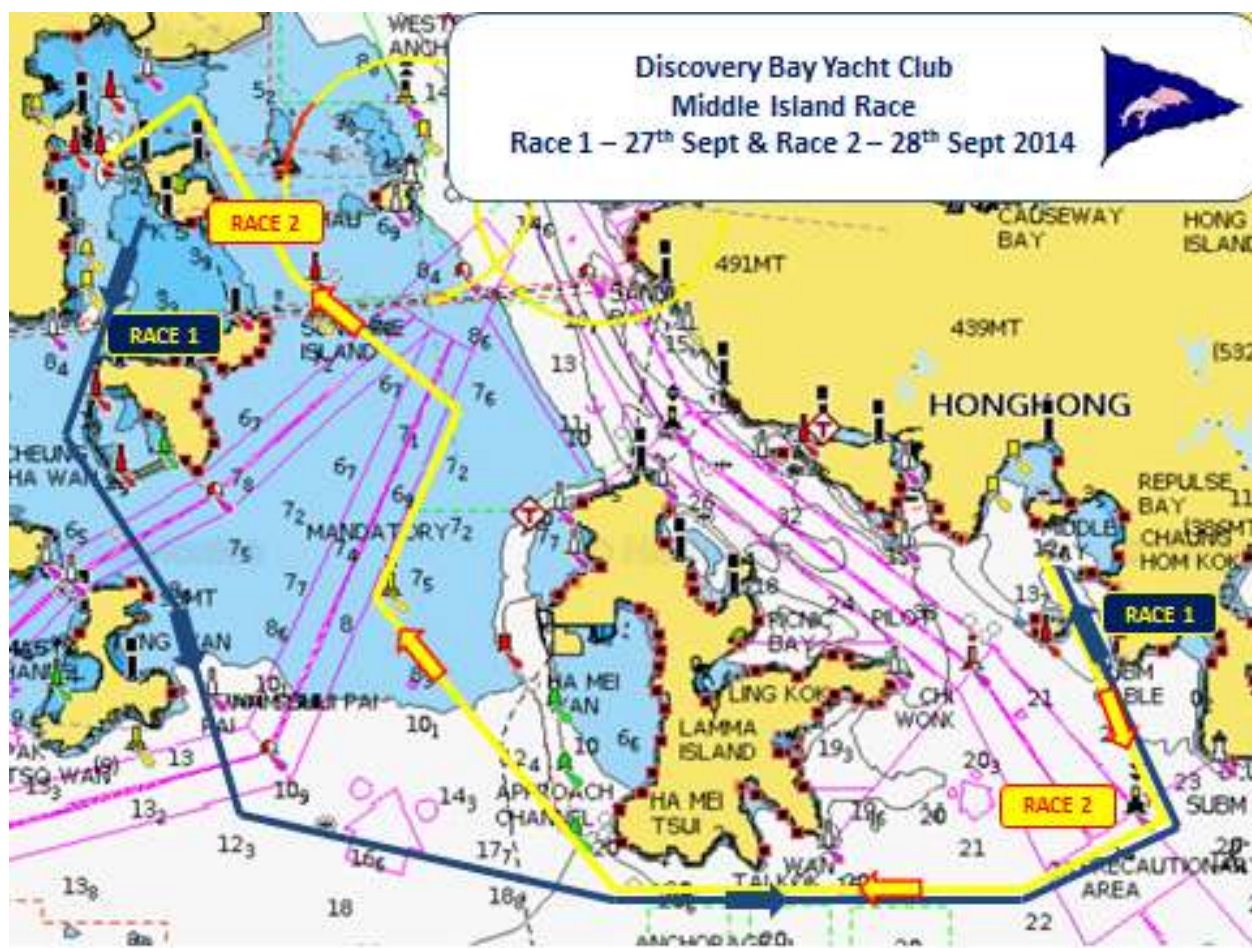
Race Officer
DBYC Middle Island Regatta
26th Sept 2014

Predicted Tide Cheung Chau



Wind Forecast Cheung Chau

Hong Kong - Cheung Chau (wave: NWW3 50 km 25.9. 2014 18 UTC)																	
Forecast	NW	2D	Map	Webcams	Wind reports	Accommodation	Schools/Rentals	Shops	Other...								
GFS 50 km	Fr	Fr	Fr	Fr	Fr	Fr	Sa	Sa	Sa	Sa	Sa	Su	Su	Su	Su	Su	
25.09.2014	26	26	26	26	26	26	27	27	27	27	27	28	28	28	28	28	
18 UTC	05h	08h	11h	14h	17h	20h	05h	08h	11h	14h	17h	20h	05h	08h	11h	14h	
Wind speed (knots)	5	5	6	8	8	7	5	5	6	7	5	6	4	4	3	4	
Wind gusts (knots)	5	5	7	8	9	8	6	6	6	7	5	6	4	4	3	4	
Wind direction	↘	↓	←	←	←	←	←	←	←	←	←	←	←	←	←	↑	
Wave (m)																	
Wave period (s)																	
Wave direction																	
*Temperature (°C)	27	27	28	29	28	28	27	27	28	28	28	27	27	27	28	28	
Cloud cover (%)																	
high / mid / low	10	41					33	7					8	19	23	24	20
*Precip. (mm/3h)	1.1						0.8		1								



PLAN FOR THE FUN STUFF

Our Key Sponsors this year are shown below and are providing some fabulous prizes.

We always get very well supported by the staff and management at both the ABC and DBMC. This year the major social event will be held at ABC Middle Island during the overnight stop. On arrival at ABC MI, we will re-hydrate with cold drinks on the dock and sponsor photographs as usual. Thank you Carlsberg

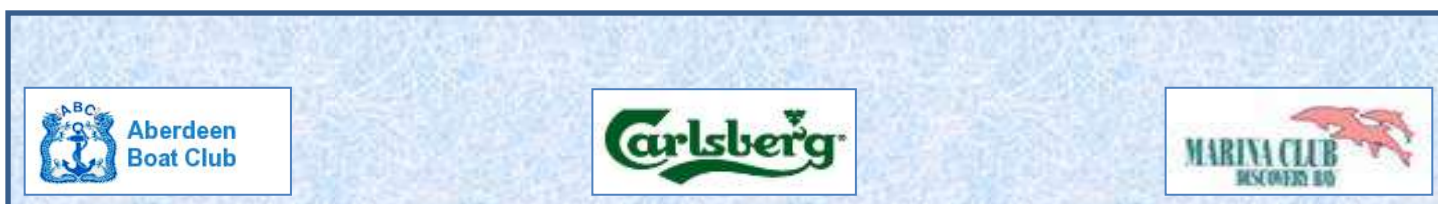
Join us for a fabulous **Parisienne Bistro Buffet** to be held at the ABC Middle Island Clubhouse, thanks to the excellent co-operation of Philippe de Manny and his staff at ABC. **Creative fancy dress is encouraged.** ABC will provide a cash bar for race participants.

ADMINISTRATION

DBMC - Berthing may be possible, (on a space-available basis for the first 8 boats by pre-booking on the entry form), at the DB Marina Club on the nights of 26th and 28th Sept. **charges may be waived for participating boats (subject to confirmation).** Participating crews may use the Marina Club bar as a guest of, and in company with, a Marina Club member.

ABC – Berthing on the MI pontoons. Further details will be published in the Sailing Instructions

DBYC MIR2013 SPONSORS



Please submit by 1700 hrs on Tuesday, 23rd Sept.

Entries received after this date will be considered as Late Entries.

* delete where applicable

Boat Name: _____ Sail / Reg No: _____
 Boat Model: _____ LOA: _____
 HKPN Rating: _____ IRC Rating: _____ LWL: _____
 Total Crew: _____ Radio: _____ Yes / No *
 Skipper's Name: _____ Mobile tel no: _____
 Telephone: _____ E-mail: _____

Participating in:- Race 1 HKPN Yes/No

Participating in:- Race 2 Pursuit Yes/No

I require berthing at the Discovery Bay marina on the nights of: _____ Friday / Sunday *

I require berthing at ABC Middle Island on the night of Sat, 27th Sept: _____ Yes / No *

Numbers for Middle Island buffet (\$260 pp or \$130 (U12)) on Sat, 27th Sept: _____

Numbers for Middle Island breakfast (\$65 pp) on Sun, 28th Sept: _____

Entry Fees

Sailing Boats: \$ 400 (or \$200 per race)
Power Boats \$ 200

I agree to abide by the Rules as defined in the DBYC Middle Island Regatta Sailing Instructions and enclose a cheque for the total entry fee of:

\$ _____

Signed: _____

Name: _____

Date: _____

Notes :

1. **Please submit entries by 1700 hrs on Tuesday, 23rd Sept.** Entries received after this date will be considered as Late Entries and incur an additional late entry fee.
2. Berthing charges at the DB marina may be waived for first 8 registered boats. **
3. Mooring/Berthing charges at the MI ABC will be waived for participating boats on Saturday night **
4. The Race Committee may exclude from the race any boat that does not meet the required safety standards.
5. See the Notice of Race and Sailing Instructions for further info.

** Subject to availability

Please make cheques payable to: **Discovery Bay Yacht Club** and mail entry form and payment to the Club mailbox at: DBYC, c/o Discovery Bay Marina Club, Discovery Bay, Lantau Island, NT.
Send Registration by email to mir@dbyc.net before 1700 hrs on Tuesday 23rd Sept.